

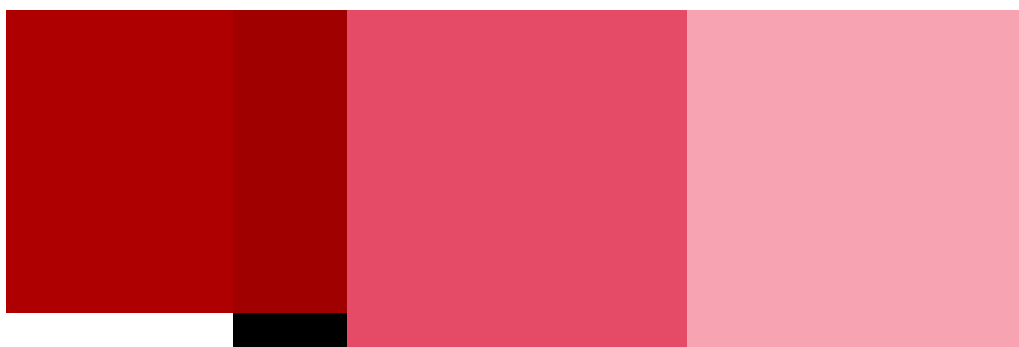


Irgazin[®] Red L 3660 HD

Medium-red DPP with good hiding power, high saturation and very good fastness to weathering

Colour Index Pigment Red 254 | 56110

chemical nature diketo-pyrrolo-pyrrole



full shade	1/3 standard depth of shade 1:4.5 TiO ₂	1/9 standard depth of shade 1:20.8 TiO ₂
------------	-------------------------------------------------------	--------------------------------------------------------

fastness to weathering	alkyd/melamine	acrylic/melamine
full shade	5	5
1/3 standard depth of shade	4 – 5	4 – 5
1/9 standard depth of shade	4	4

suitability for industries					
automotive	general industrial	coil	powder	wood	decorative
●	●	●	●	○	●
suitability for applications					
baking finishes	water-based	acrylic/isocyanate	acid-curable	amine-curable	air-drying
●	●	●	●	●	●
explanation of symbols ● suitable ○ potentially suitable ○ not suitable					

physical data of the pigment

bulk volume	conductivity	density (20 °C [68 °F])	dry content
2.9 l/kg	< 200 µS/cm	1.63 g/cm ³	≥ 98.5 %

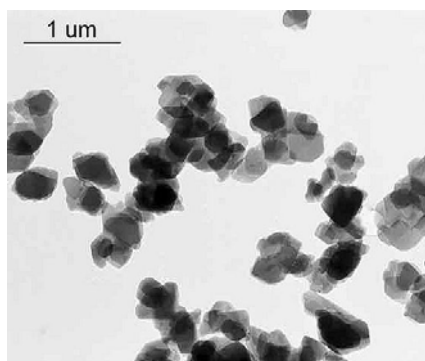
oil absorption	specific surface	thermal resistance
44 g/100 g	15 m ² /g	200 °C (392 °F)

fastness to solvents

butyl acetate	ethanol	methylethyl ketone	water
4	4	4	5
white spirit	xylene		
5	5		

resistance of the pigment in coatings

acid (2 % HCl)	alkali (2 % NaOH)	overcoating
5	4 - 5	5



electron microscopy

Regulatory and Compliance status

For details regarding the regulatory and compliance status, please refer to the respective product regulatory information sheets and food contact certificates.

They are available upon request at pigments-safety@basf.com.

Note

The descriptions, designs, data and information contained herein are presented in good faith, and are based on BASF's current knowledge and experience. They are provided for guidance only, and do not constitute the agreed contractual quality of the product or a part of BASF's terms and conditions of sale. Because many factors may affect processing or application/use of the product, BASF recommends that the readers carry out their own investigations and tests to determine the suitability of a product for its particular purpose prior to use. It is the responsibility of the recipient of product to ensure that any proprietary rights and existing laws and legislation are observed. No warranties of any kind, either expressed or implied, including, but not limited to, warranties of merchantability or fitness for a particular purpose, are made regarding products described or designs, data or information set forth herein, or that the products, descriptions, designs, data or information may be used without infringing the intellectual property rights of others. Any descriptions, designs, data and information given in this publication may change without prior information. The descriptions, designs, data and information furnished by BASF hereunder are given gratis and BASF assumes no obligation or liability for the descriptions, designs, data or information given or results obtained; all such being given and accepted at the reader's risk.

® = registered trademark, ™ = trademark of the BASF Group, unless otherwise noted

BASF Colors & Effects GmbH

An der Rheinschanze 1
67059 Ludwigshafen am Rhein

www.colors-effects.basf.com

Tesla-ce@basf.com